

A future hospital for our
community of today
and tomorrow.





Keep care local.

- 75 years of partnerships and protecting our taxpayer supporters, community-owned
- Continued wise local investments that keep care local
- 300% provider growth since 2016

A 1950's hospital can no longer solve 21st-century needs of our community.

- Our growing community: population, businesses, hospital use
- Community care needs (surveys)
 - 1) More specialty providers available
 - 2) More primary care providers available
 - 3) Recruit and retain the best possible staff
 - 4) Modern and up-to-date facilities
 - 5) Reduce the need to travel outside the area for healthcare
- Current hospital facility limitations

Expand reliable local emergency care.

- Emergency Department (ED) is at 200% above capacity
- Moses Lake population growth is 23.5% — State of Washington population growth is 12.7%
- Current ED expansion limitations

Expanded specialty and surgical care that stays local.

- Surgery is operating at max capacity
- Larger surgical rooms needed for advanced surgical technology (robotic-assisted equipment)
- Seven new specialty care services since 2016

New first-in-class modern maternity care.

- Over 1,000 babies delivered annually
- Labor, delivery, recovery all in one patient room
- Advanced nursery allowing at-risk mothers and babies to stay close to home in the early weeks of life

Flexible and adaptable hospital and ICU rooms.

- Private patient rooms with space for family to stay overnight
- Advanced technology in patient room for improved care
- Expansion capable as community grows meeting the needs of your family through your healthcare experience



Medical/surgery patient room



ED exam room



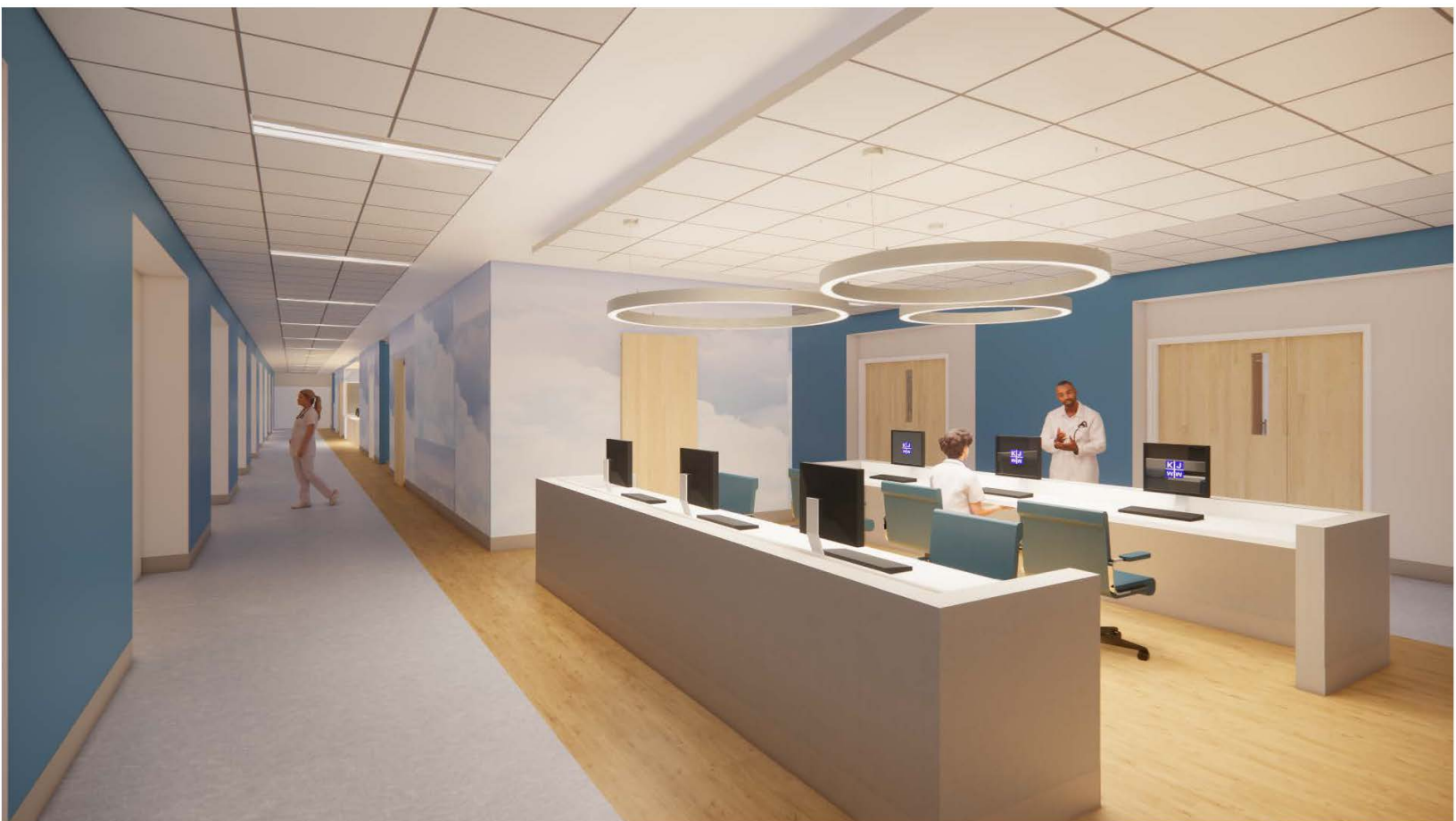
Infusions, Pre/Post patient room



Mother/Baby nurses' station



All-in-one private, maternity patient room



Medical/surgical nurses' station



Medical/surgical private patient room